



Categories

www.TGISC.de

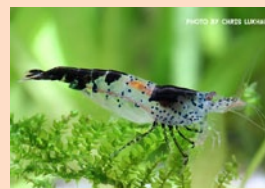
Gruppe 01:

Neocaridina davidi
all colors



Gruppe 02:

Neocaridina davidi - Rili
all colors



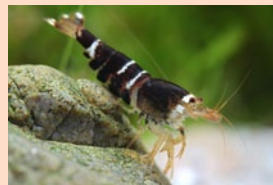
Gruppe 03:

"Super Crystal Red"



Gruppe 04:

"Super Crystal Black"



Gruppe 05:

Red Bee all grades



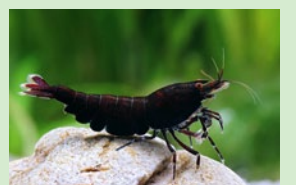
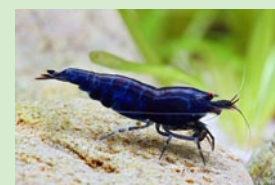
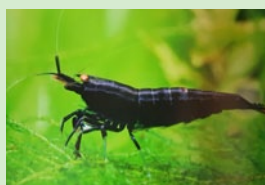
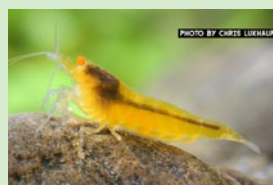
Gruppe 06:

Black Bee all grades



Gruppe 07:

Tiger variants
full color



Gruppe 08:

Tiger variants
striped / dotted





Categories

www.TGISC.de

Gruppe 09:

Red "Pinto"

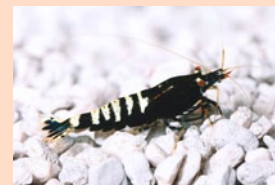
Spotted Head / Multistripe



Gruppe 10:

Black "Pinto"

Spotted Head / Multistripe



Gruppe 11:

Red "Shadow Bee"

Classic colors and Bee-influenced Signes (full, lined, saddled, banded, Mosura, Hinomaru und Co.)



Gruppe 12:

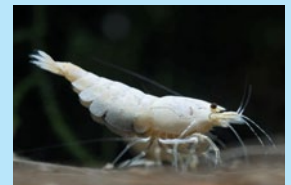
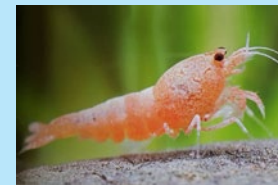
Black "Shadow Bee"

Classic colors and Bee-influenced Signes (full, lined, saddled, banded, Mosura, Hinomaru und Co.)



Gruppe 13:

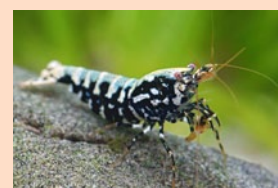
Cardidina sp.: "Blue - & Red Bolt", "Steel Blue & Red", "Snow White", variants



Gruppe 14:

Cardidina sp.:

"Fishbone" + "Galaxy" variants

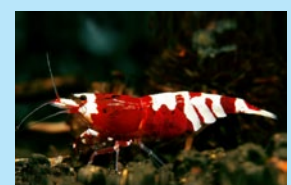
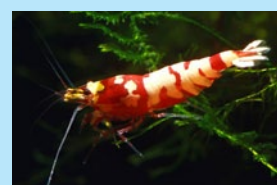


Gruppe 15:

Cardidina sp.: Crossbreeding - focus:

Color quality

Focus is on quality and attractiveness of the skin colors. Besides pure and homogenous colors, special colors are permissible (e.g. metallic), with the exception of monochrome or rainbow color gradients within one color, especially in the white parts. We need a certain amount of pattern and at least a second color to be able to determine the quality.





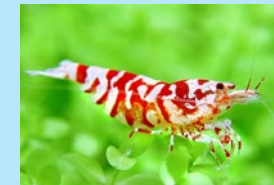
Categories

www.TGISC.de

Gruppe 16:

Cardidina sp.: Crossbreeding - focus:
Pattern quality

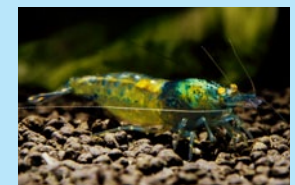
Focus is on quality and attractiveness of patterns. All patterns not mentioned in the list above are permissible, even extreme Tiger drifts. Amongst other factors, here we take into account the harmony of the pattern, the symmetry, complexity and the overall impression.



Gruppe 17:

Cardidina sp.: Crossbreeding - focus:
Innovation

Focus is on general quality and attractiveness of new and undefined variants that do not fit any of the categories above. Besides the general criteria, here we also take the innovation factor into account.





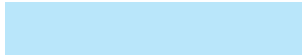
-  = well-known defined shrimp variants
-  = Tiger-influenced variants
-  = new and undefined variants

Photo credits:

Chris Lukhaup

J. Hesse, F. Ölschlger, M. Reinelt, M. Pöhler, A. Horge Sadiki, J. Asper, A. Wayne